

N.W. 1/4  
SECTION 34, T.7N.,R2W., S.L.B.&M.

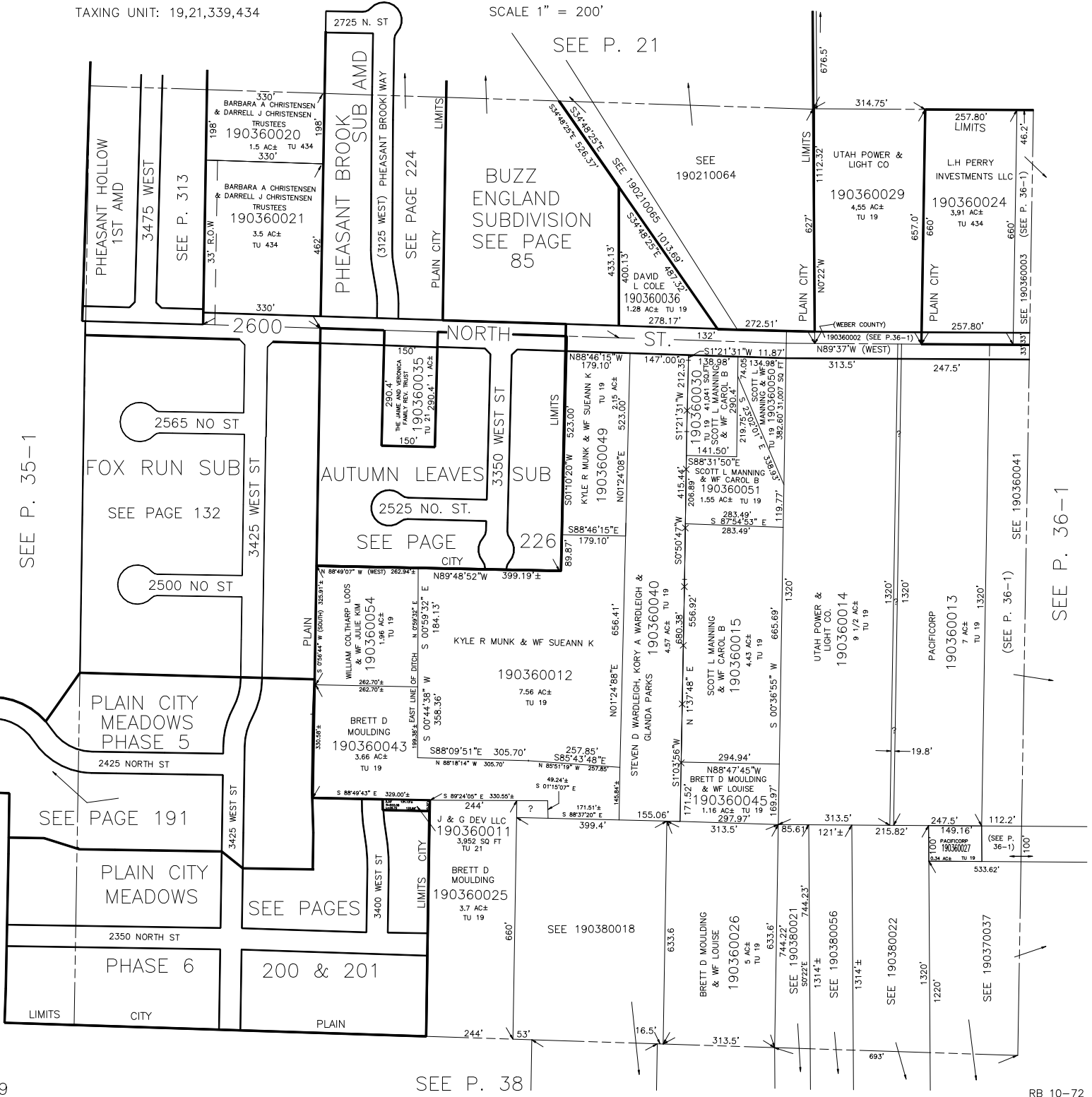
IN WEBER COUNTY & PLAIN CITY

PREFIX: 19-036

TAXING UNIT: 19,21,339,434

SCALE 1" = 200'

SEE P. 21



SEE P. 35-1

SEE P. 36-1

SEE P. 38